

TELEPHONE SETS — 304A,C, 5304C
COMMON BATTERY — CONNECTIONS

1.00 INTRODUCTION

1.01 This section covers connections for 304A and C, and 5304C telephone sets.

1.02 These sets are used for the following services :

- Individual lines.
- 2-party flat rate.
- 2-party message rate.
- 2-party automatic ticketing.
- 2-party automatic message accounting and zone registration.
- 4-party semiselective.
- Multiparty divided code.
- Multiparty nonselective.

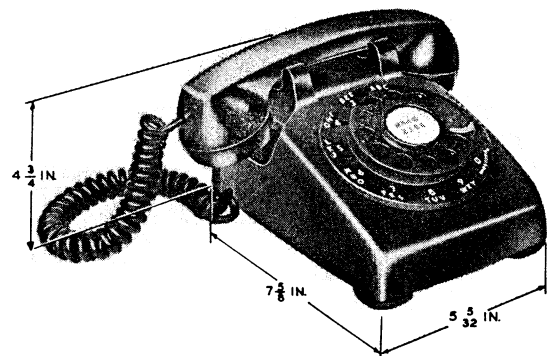


Fig. 2 — 5304 Type — G Handset



Fig. 1 — 304-type Telephone Set

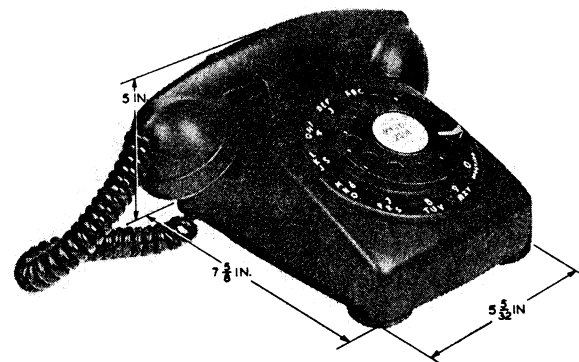


Fig. 3 — 5304 Type — F Handset

TABLE A

COMBINATION OF APPARATUS

Tel Set Code	Use	Components						
		Handset	Dial	Apparatus Blank	Induction Coil	Ringer	Capacitor	Filter (Optional)
304A	Manual	F1, F4	—	82A or 94A	101B	B2AL	195A	—
304C	Dial		5H or 6A	—				61P
5304C	Dial	F1, F4, G1	5M or 6H	—	101B	B2AL	195A	61S

2.00 CONNECTIONS

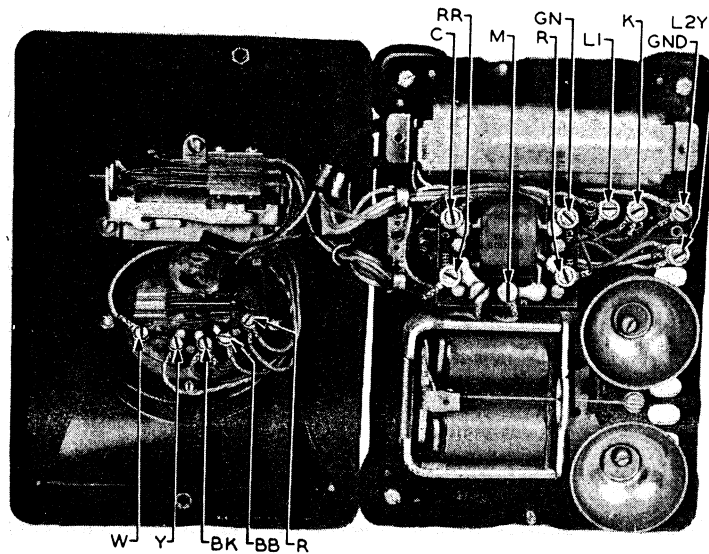


Fig. 4 – 304C Telephone Set (5304C Is Similar)

TABLE B

LINE AND RINGER CONNECTIONS

Wire or Lead		Terminations				
		Individual or Bridged	Ring Party	Tip Party	Tip Party	
Location	Color					
		Zone Registration	SxS with AMA			
		X-bar with AMA	Mod X-bar with AMA			
Mounting Cord in Set	R	L1	L1	RR	L1	L1
	GN	L2Y	RR	L1	L2Y	L2Y
	Y	GND	GND	GND	GND	GND
Ringer Lead	R	L1	K	GND	K	M
	BK	K	GND	K	GND	RR
	SL	GND	L2Y	L2Y	M	K
	SL-R	GND	L2Y	L2Y	RR	GND
Ringing Capacitor Lead	Y	L2Y	L1	L1	L2Y	L2Y
	SL	K	K	K	K	K
Switchhook Lead	GN-R	L2Y	RR	RR	L2Y	L2Y
Mounting Cord at Connecting Block	R	R	R	R	R	R
	GN	G	G	G	G	G
	Y	B	Y	Y	Y	Y

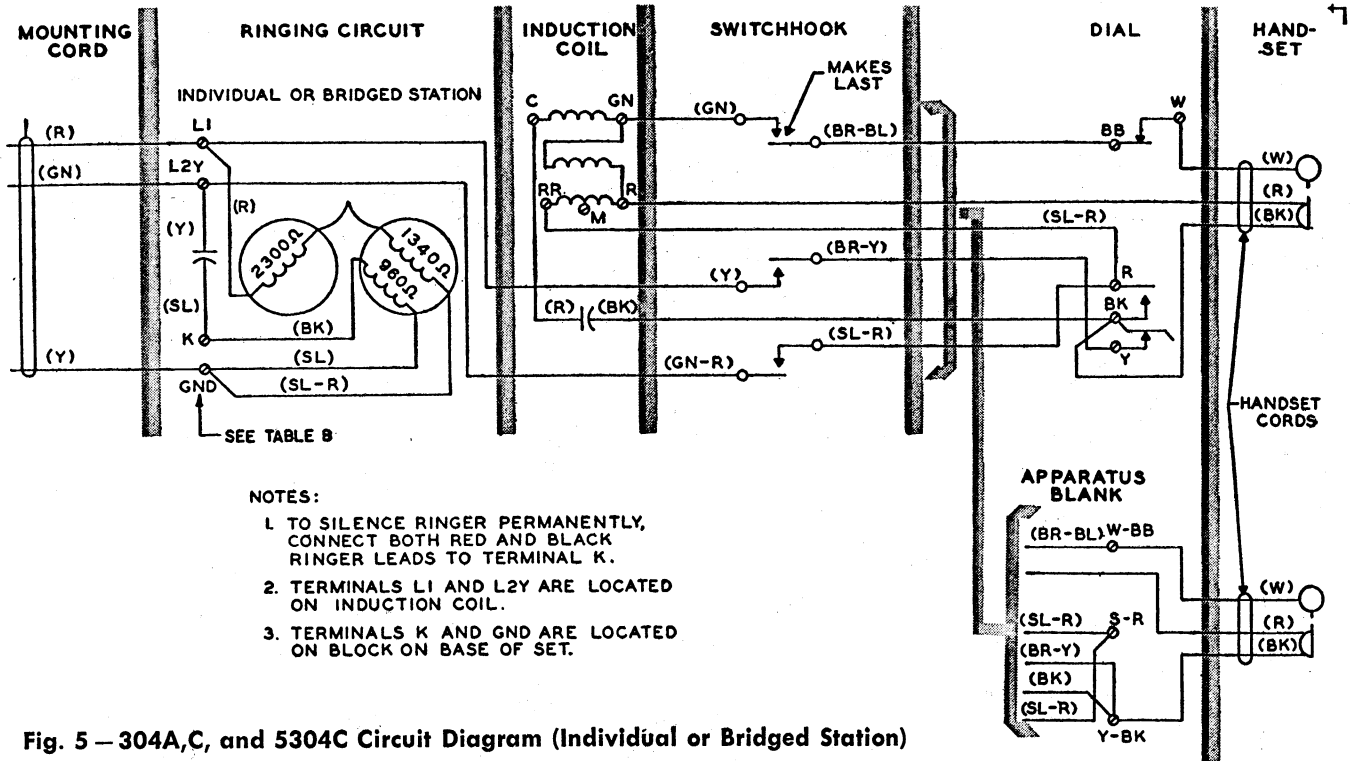


Fig. 5 — 304A,C, and 5304C Circuit Diagram (Individual or Bridged Station)

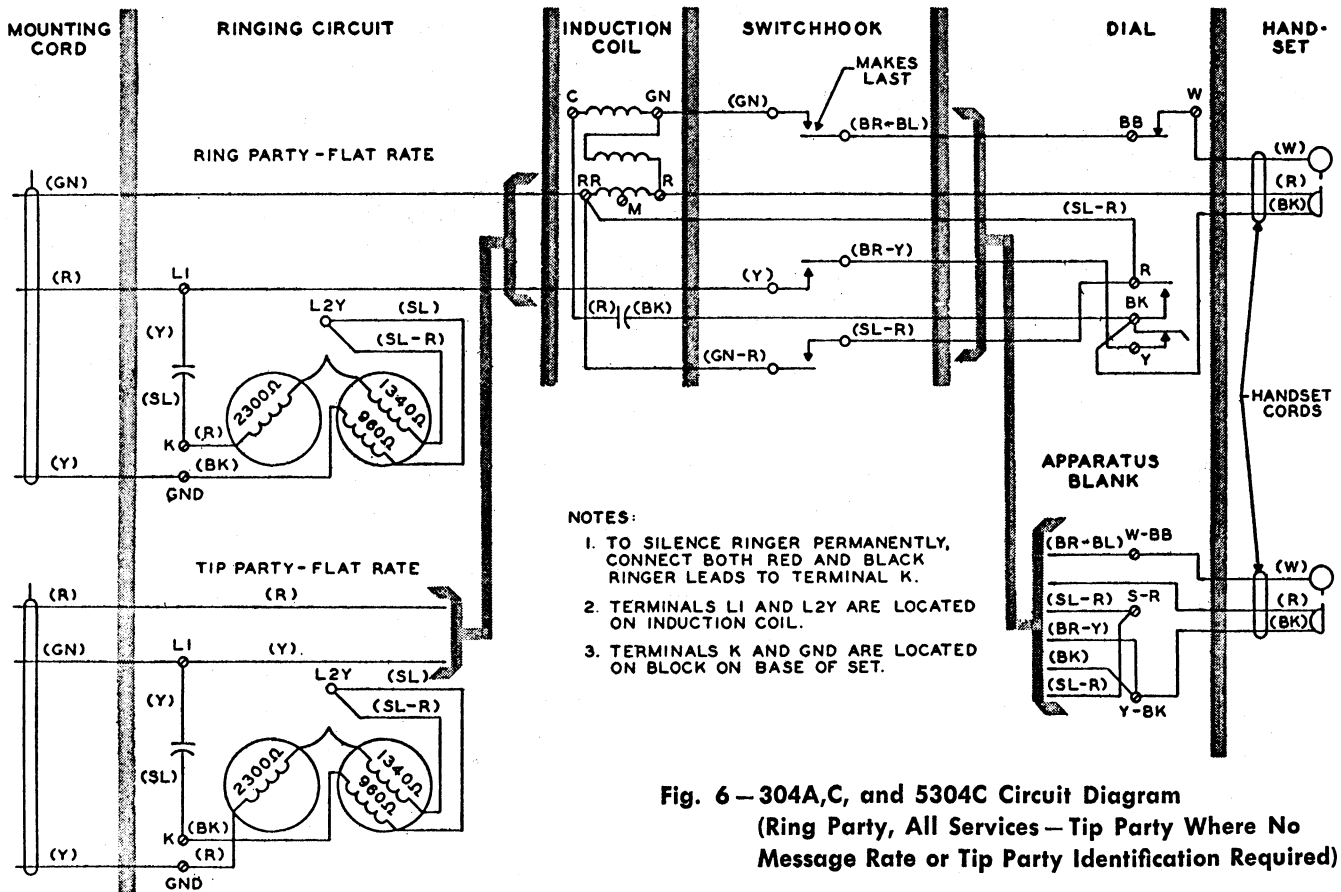
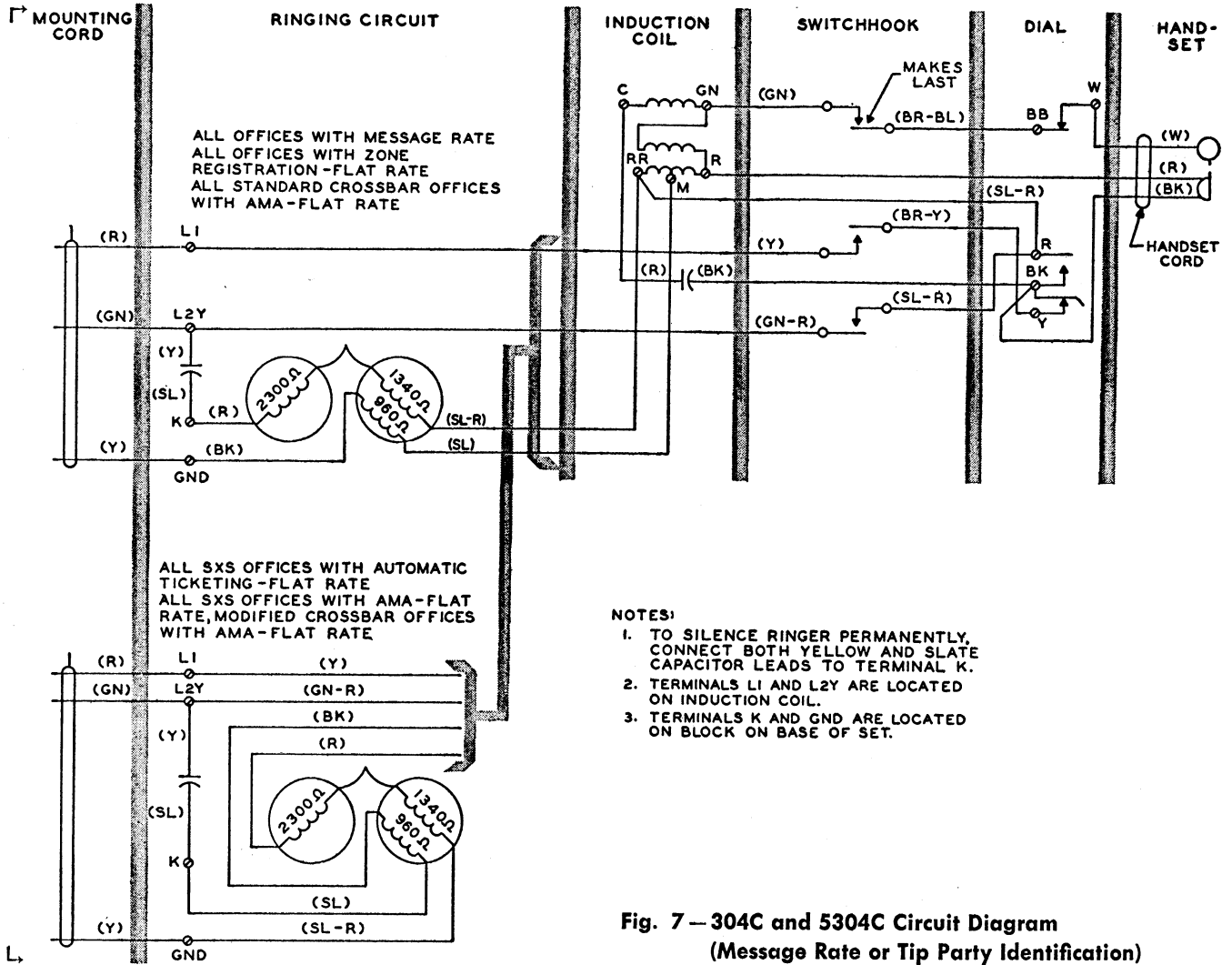


Fig. 6 — 304A,C, and 5304C Circuit Diagram (Ring Party, All Services — Tip Party Where No Message Rate or Tip Party Identification Required)

SECTION C38.555



NOTES:

1. TO SILENCE RINGER PERMANENTLY, CONNECT BOTH YELLOW AND SLATE CAPACITOR LEADS TO TERMINAL K.
2. TERMINALS L1 AND L2Y ARE LOCATED ON INDUCTION COIL.
3. TERMINALS K AND GND ARE LOCATED ON BLOCK ON BASE OF SET.

Fig. 7 — 304C and 5304C Circuit Diagram
 (Message Rate or Tip Party Identification)

3.00 FILTER CONNECTIONS

When a radio-frequency suppression filter is used in the 304C or 5304C telephone set, make connections as shown in Fig. 8.

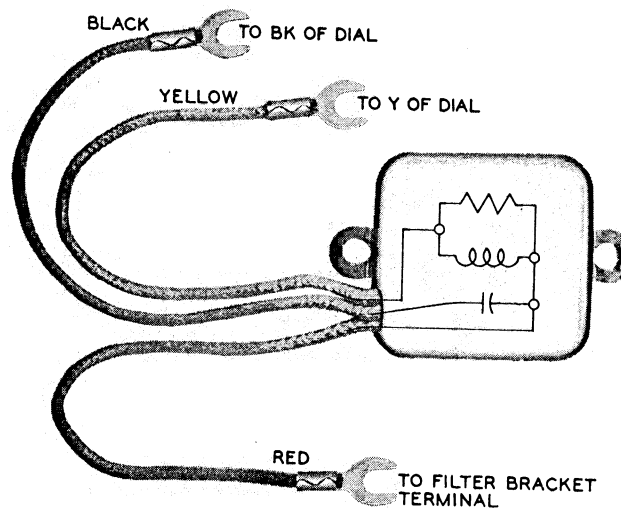
4.00 RINGER

4.01 Bias spring of B2AL ringer is normally placed in high notch. However, bias spring may be moved to notch which gives the most satisfactory ring. ↵

4.02 The ringing bridge in this set is high-impedance type. For information on number and type of ringing bridges permitted on each line, see the C Section covering ringer bridge limitations.

5.00 G-TYPE HANDSET

When a G-type handset is used with the 5304C telephone set, the red and one white conductor of the handset cord should be terminated on terminal R of the induction coil and the remaining conductors to their respective terminals.



Note: Remove brown-yellow lead from Y of dial and terminate on filter bracket terminal.

Fig. 8 — 61P or 61S Filter (Without Bracket)