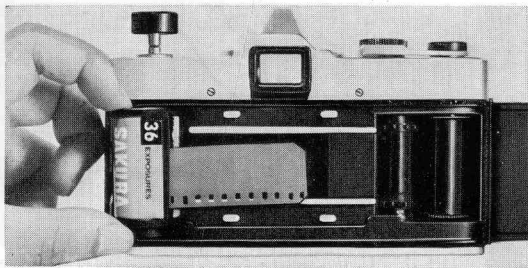
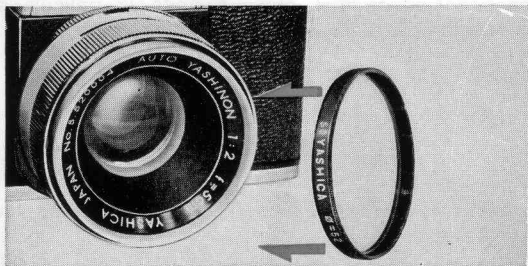


Flip up Film Rewind Crank and wind in the direction of the arrow. Toward the end of the film, you will feel a slight resistance, but continue turning Film Rewinding Crank until the film end pulls away from Take-up Spool slot.

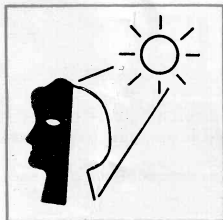


After the film is completely rewound into the cassette, open the back cover. Pull up Film Rewind Knob and remove the cassette.

## FILTERS & BACKLIGHTED SCENE



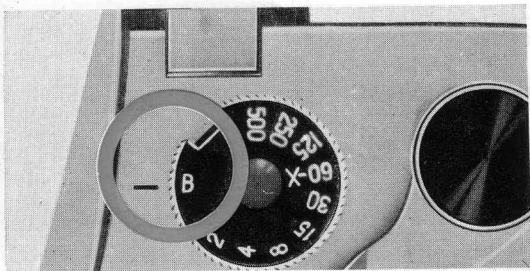
In strong sun light such as snow scenes and summer beach scenes, the use of a filter (Y2, O2 etc.) is recommended for black & white photography.



### Exposure Compensation for Backlighted Scenes

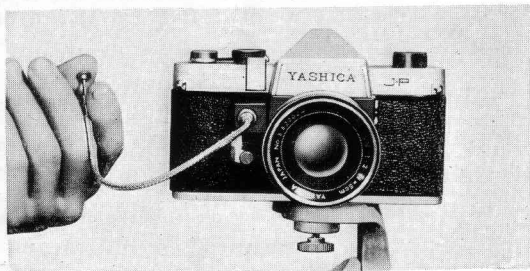
The exposure for a backlighted scene is quadruple the regular exposure. This means you should open the aperture 2 stops (towards the smaller numbers).

## SLOW SHUTTER



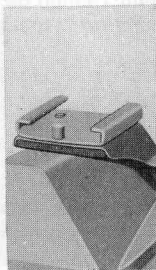
B setting is used for the exposure requiring more than 1/2 second.

When the shutter speed is set at B setting, the shutter will remain open as long as Shutter Release Button is depressed.

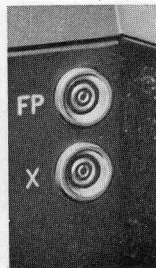


A tripod should be used to support the camera when you use the slower shutter speeds than 1/30 second.

## FLASH PICTURES

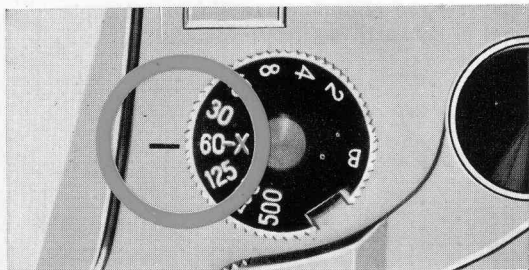


To clip on a flash gun, first, place the accessory shoe on Viewfinder Eye-Piece.



Plug a flash gun cord in the following synchro. terminals.

Flash bulb FP class → **FP terminal**  
Electronic flash → **X terminal**

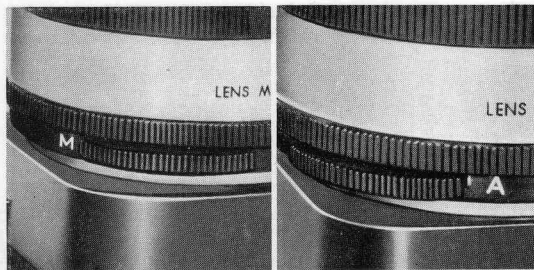


For the use of electronic flash, align Shutter Speed Dial to 60-X setting.

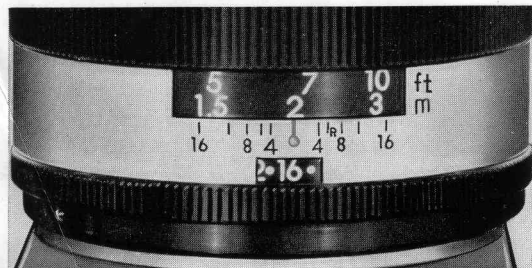
Shutter speed	1/500	1/250	1/125	1/60-X	1/30	1/15	1/8	1/4	1/2	B	
Terminal											
FP	FP class bulbs										
X				Electronic flash							

The use of a BC type flash gun and FP class bulbs is recommended for perfect synchronization.

## PREVIEW BAR

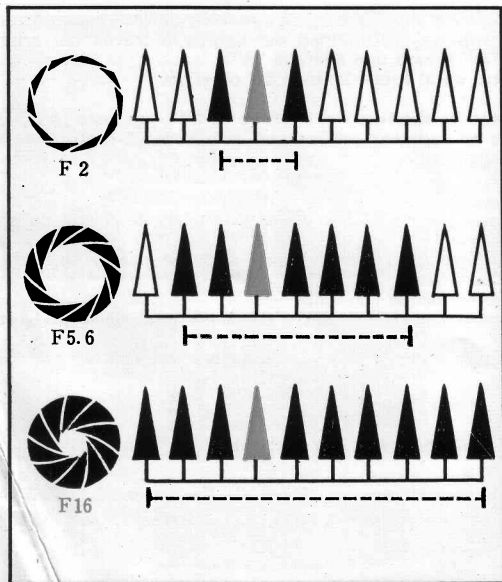


Move Preview Bar towards the figure "A" ("M" appears) until it stops to determine the depth of field. Use the ground glass center around the central spot for such examination. Be sure to return the bar towards "M" ("A" appears).



Depth-of-Field Scale will be found on the lens barrel. When the camera is focused at 2 meters with the lens opening f/16, the distance from 1.5 meters to 3.1 meters will be focus. To determine the depth-of-field, read the distance aligned with the aperture in use on either side of the distance setting.

## DEPTH-OF-FIELD



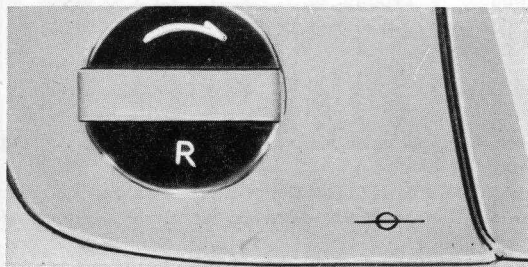
When you focus the camera on a subject, there is a certain distance in front and back of the subject, within which other objects will be also in focus.

This is known as "Depth-of-Field," which varies with the lens aperture. The smaller the aperture, the greater Depth-of-Field.

## INFRARED PHOTOGRAPHY



After determining the subject distance in the usual way, reset it against the dot, Infrared Photo Index Mark.



The mark on the top of the camera indicates the position of the film. When you measure actual distance from subject to the camera, it should be the distance from the subject to this mark.

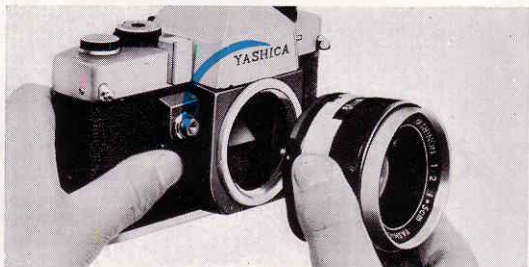




**Exclusive Accessories  
for Yashica J-P**

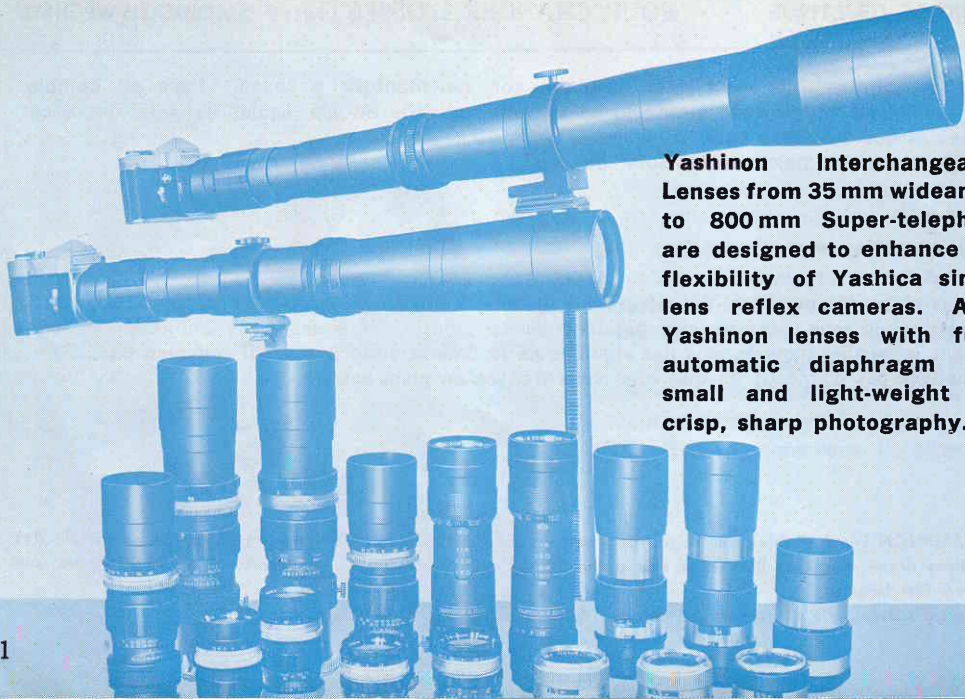
**A complete range of high  
quality accessories are  
available.**

## CHANGING THE LENS



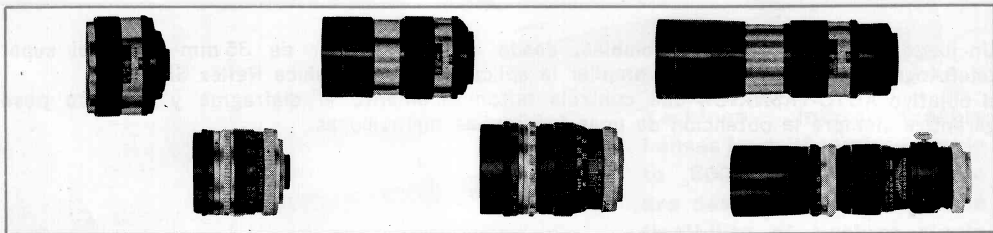
All Yashinon interchangeable lenses are the convenient "screw-in" type mount. To change the lens, turn the lens counter-clockwise and dismount it. Insert the desired lens by turning the lens barrel clockwise until it is secured firmly.

Do not change the lens in direct sun light.



**Yashinon Interchangeable Lenses from 35 mm wideangle to 800 mm Super-telephoto are designed to enhance the flexibility of Yashica single lens reflex cameras. Auto Yashinon lenses with fully automatic diaphragm are small and light-weight for crisp, sharp photography.**

## YASHINON INTERCHANGEABLE LENSES



### 35 mm Wide-angle

---

\*Auto Yashinon 35 mm f/2.8  
Fully automatic diaphragm

\*Super Yashinon-R 35 mm  
f/2.8  
Preset diaphragm

### 135 mm telephoto

---

\*Auto Yashinon 135 mm f/2.8  
Fully automatic diaphragm  
Built-in slide system lens  
hood

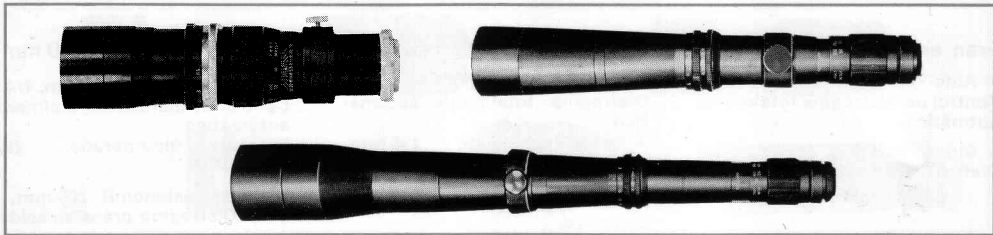
\*Super Yashinon-R 135 mm  
f/2.8  
Preset diaphragm

### 200 mm telephoto

---

\*Auto Yashinon 200 mm f/4  
Fully automatic diaphragm  
Built-in slide system lens  
hood

\*Super Yashinon-R 200 mm  
f/4.5  
Preset diaphragm



**300 mm telephoto**

---

\*Super Yashinon-R 300 mm  
f/5.5  
Preset diaphragm

**600 mm super-telephoto**

---

Super Yashinon-R 600 mm  
f/8  
Preset diaphragm

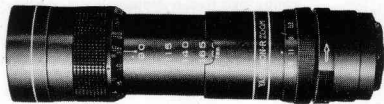
**800 mm super-telephoto**

---

Super Yashinon-R 800 mm  
f/8  
Preset diaphragm

---

\*Super Yashinon-R 400 mm  
f/6.3 Preset diaphragm is also available.



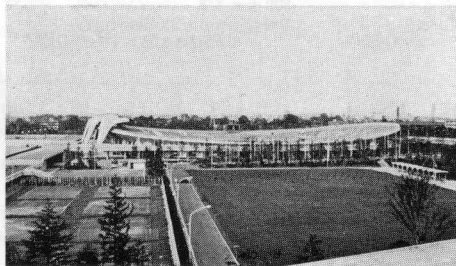
● Yashinon-R Zoom 90-190 mm f/5.8  
Preset diaphragm

**WIDE VARIETY IN ANGLE OF VIEW**

VARIACION DE ANGULO DE VISTA

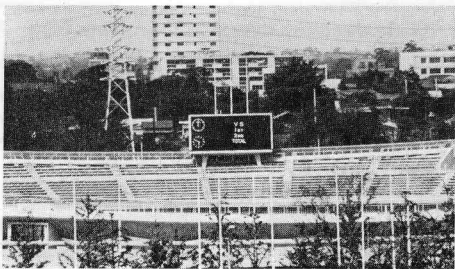
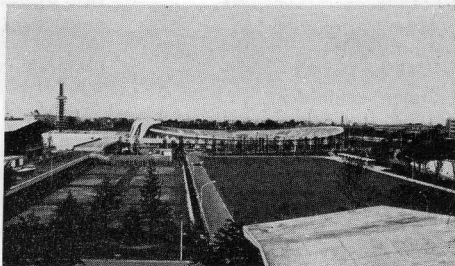
GRANDE DIVERSITE DE  
L'ANGLE DE VISION

DIESE GROSSE AUSWAHL VON VERSCHIEDENEN  
BILDWINKELN STEHT IHNEN ZUR VERFÜGUNG !



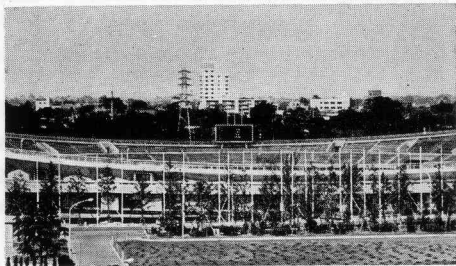
**50 mm**

**35 mm 64°**

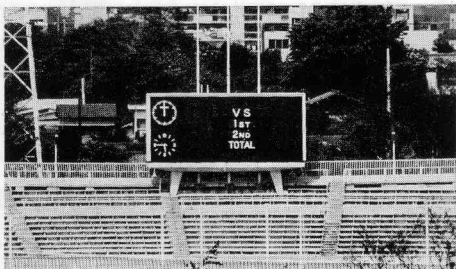
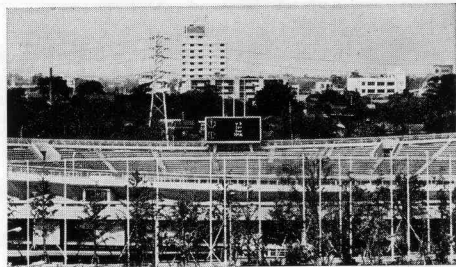


**300 mm 8°**

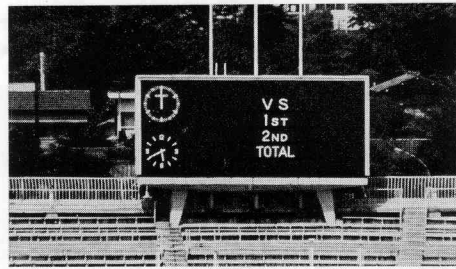
135 mm 18°



200 mm 12°

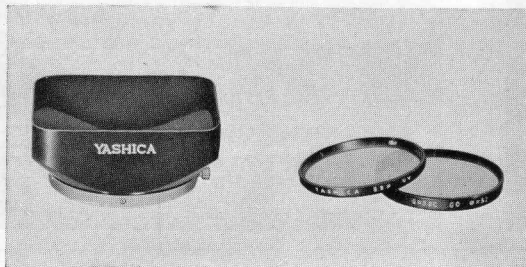


600 mm 4°



800 mm 3°

## EXCLUSIVE ACCESSORIES



### Lens Hood (54 mm slip-on type)

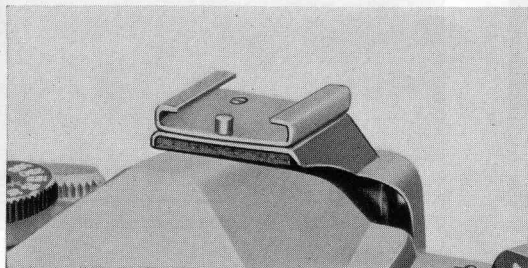
The use of a lens hood is recommended to shade off unnecessary light and reflections.

---

### Filter (52 mm screw-in type)

In bright sun light scenes, snow scenes and beach scenes, the use of a filter is recommended for fine quality pictures.

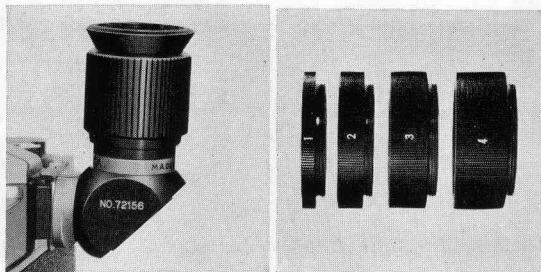
---



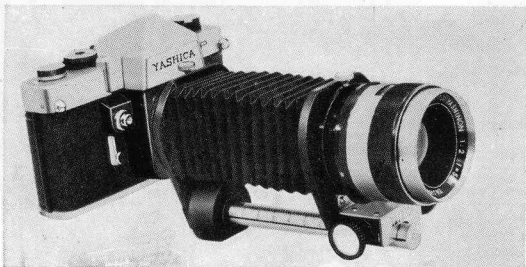
**Accessory Shoe** clips onto Viewfinder Eye-Piece.

---





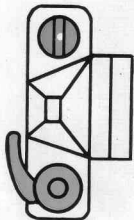
**Right Angle Viewfinder** permits picture-taking from unusual angles such as extremely low, right angle, over-head position.



**Extension Tubes** for close-up and photomacrography. Set of 4 tubes can be used singly or in combinations.

**Extension Bellows** for extreme close-up and photomacrography.

## TIPS ON USE OF CAMERA



### FILM LOADING

After loading film, turn Film Rewind Crank clockwise to tighten the film.

When you advance the film, if Film Rewind Knob moves counter-clockwise, it indicates that the film is wound correctly.



### CARE OF SELF-TIMER

If Self-Timer should stop half-way, please wind Film Advance Lever until it stops and then reset Self-Timer.