

PETRI
PENTTA



INSTRUCTION BOOK

DESCRIPTION OF PARTS



- ❶ FILM WINDING LEVER
- ❷ SHUTTER SPEED DIAL
(Single-pivot Non-rotation System)
- ❸ FLASH SOCKET
- ❹ SYNCHRO-SWITCH (X & FP)
- ❺ ASA SPEED & AUTOMATIC
EXPOSURE COUNTER
- ❻ FILM REWIND CRANK
- ❼ SCREWING HOLE FOR
ACCESSORY SHOE ATTACHMENT
- ❽ NECK STRAP LOOP
- ❾ SHUTTER RELEASING BUTTON
- ❿ DIAPHRAGM RING
- ⓫ DIAPHRAGM PRESETTING RING
- ⓬ DEPTH OF FIELD SCALE
- ⓭ FOCUS ADJUSTING
HELICOID RING
- ⓮ ORRIKKOR F : 2 50mm LENS

CONTENTS

• HISTORICAL BACKGROUND OF PETRI PENTA	3
• SPECIFICATIONS	4
• ORIKKOR LENS	5~6
• DESCRIPTION OF PETRI PENTA	7
• FILM LOADING	8~10
• HOW TO HOLO YOUR PETRI PENTA	11
• FOCAL ADJUSTMENT	12
• DIAPHRAGM AND SHUTTER SPEED SETTINGS ...	13
• EXPOSURE SETTING	14
• SEASONABLE EXPOSURE GUIDE	15
• NEW DEVICES	16
• DEPTH OF FIELD GUIDE	17~18
• SYNCHRO-FLASH PHOTOGRAPHY	19~20
• FILM UNLOADING AFTER SHOTS	21
• DEVELOPMENT OF YOUR PICTURE	22
• ACCESSORIES FOR PETRI PENTA	23~28
• PICTURE TAKEN BY PETRI PENTA	29
• CARE AND HANDLING OF YOUR PETRI PENTA ...	30



The KURIBAYASHI CAMERA INDUSTRY, INC. which started its optical manufacturing in 1910, is one of the most experienced camera manufacturers in Japan.

In recent years, over ten types of new PETRI cameras have been introduced to the still camera fans, including the 6x6-Trio; PETRI RF, PETRI Super, PETRI Flex, the PETRI 35 series; F3.5, F2.8, F1.9 and the well-known 'Green-O-Matic' series; F2.8, F1.9 and F1.8 which have made PETRI famous the world over.

Our motto "High Quality Cameras at Lowest Possible Prices" is made possible through our technical know-how and our most modern and efficient facilities.

Our surperlative conveyor system turns out finished cameras on the assembly line process - from lens, body, shutter, assembly and final inspection - which guarantees uniformity, precision and reliability.

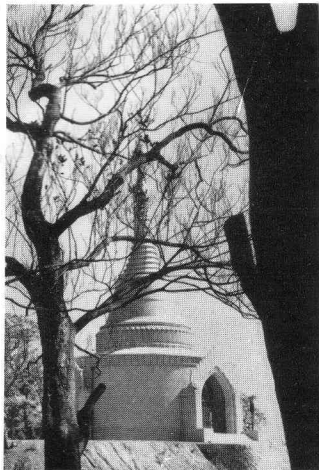


PETRI

PETRI PENTA



Superlative Features of PETRI PENTA



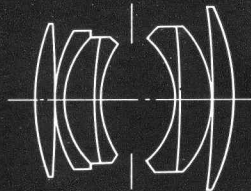
- TYPE :** Penta-Prism single lens reflex with Presetting Diaphragm
FILM SIZE : 35mm film (20 or 36 exposures)
PICTURE SIZE : 24mm x 36mm
STANDARD LENS : PETRI ORIKKOR 50mm, F2, color corrected (Amber-Magenta coated) lens.
SHUTTER : Focal Plane Shutter
SHUTTER SPEEDS : 1/2, 1/4, 1/8, 1/15, 1/30, 1/60, 1/125, 1/250 1/500 sec. and B.
VIEW-FINDER : Penta-Prism viewfinder with built-in image brightening Fresnel lens
MIRROR : Shutter-coupled "Quick Return" System which avoids any image black-out. Assures viewing continuity, to capture the "just right" expression or action.
FILM TRANSPORT & REWIND : Single-stroke (180°) rapid transport lever which automatically transports film and cocks the shutter simultaneously.
INTERCHANGEABLE LENS : PRAKTIKA Type screw-in mount (Diameter :42mm, Pitch : 1mm)
SYNCHRONIZATION : FP & X Synchronization with built-in German type synchro-socket



ORIKKOR LENS



PETRI ORIKKOR F2 50mm



7-element, 4 group structure, aperture 2 - 22, direct mirror barrel, screw type

$42\phi P=1,$

Divided index type interchangeable lenses with one hand preset aperture amber-magenta combination coating

105mm

f = 1:3.5

135mm

f = 1:3.5

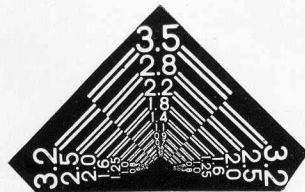
180mm

f = 1:3.5

500mm

f = 1:8

TEST CHART



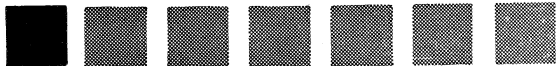
THE ORIKKOR F 2 50mm LENS

A new type of high quality lens which has the back focus at 73% of the focal length is made of 6 layers of high refractive index flint glass. All lens aberrations have been completely corrected, and because glass of high refractive index is used, the reproduction of the original images are insured to the highest degree.

The unique amber-magenta coating of PETRI ORIKKOR lenses gives the highest effectiveness to both black & white and color photography.

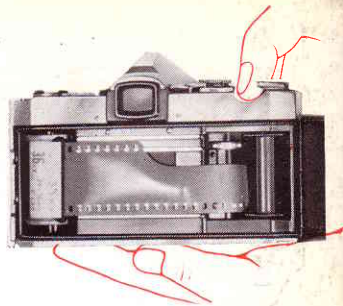
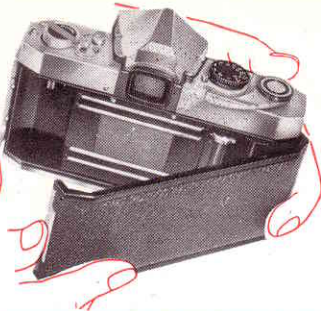


■ PETRI PENTA ■



Our latest 35mm camera is the PETRI PENTA, a handsome eye-level-prism plus instant-return-mirror-knob with a manually preset 50mm F2 lens. Other features include a single-stroke rapid-advance lever, shutter speeds from 2 to 1/500 sec., & B. a rapid-rewinding crank and a self-starting frame counter. Six kinds of Interchangeable Lenses for PETRI PENTA with focal lengths ranging from 35 to 50mm are available.

Beauty of design, simplicity of operation, sturdy construction, and the assurance of perfect pictures at all times, make PETRI PETRI the camera of all cameras. Whether for color, black and white, indoors or out, with or without flash, the PETRI PENTA will always be equal to the situation and ready to help you to make those true-to-life pictures that you will cherish for many years.



OPENING THE BACK COVER

Pull down the lever with your thumbnail to open the cover.

The cover will be automatically released as shown in the picture.

NOTE: Be sure that the sprocket holes in the film line up with the projections on the take-up sprocket. Push back the film rewind knob so that it holds the cartridge. Make sure it goes in all the way. If not, rotate the knob slowly until it seats itself.

FILM LOADING

Pull out the film rewind knob on top of the camera. Slip the end of the film into the slot in the take-up spool so that the end is fastened.

Pull the cartridge back, letting enough film unwind so that you can place the cartridge in its compartment.

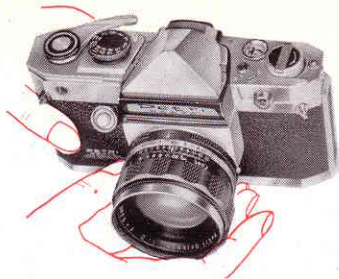
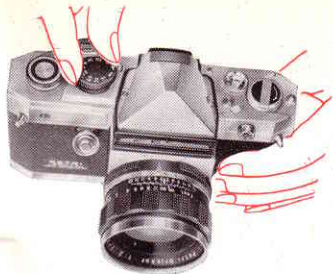


CLOSING THE BACK COVER

Back cover will automatically be closed by pushing it and simultaneously the starting point will appear opposite the black indicator point on the film counter.

FILM WINDING

Cock the camera by turning the film winding lever and press the shutter button. Repeat this operation again then turn film winding lever only and you are ready to snap your first picture.



SETTING SHUTTER SPEED

Shutter speed is set by turning the Shutter Dial at green indicating point. Before using shutter speed dials, read "FOCAL ADJUSTMENT" on page 12 and "FOCAL PLANE SHUTTER OF PETRI PENTA" on page 13.

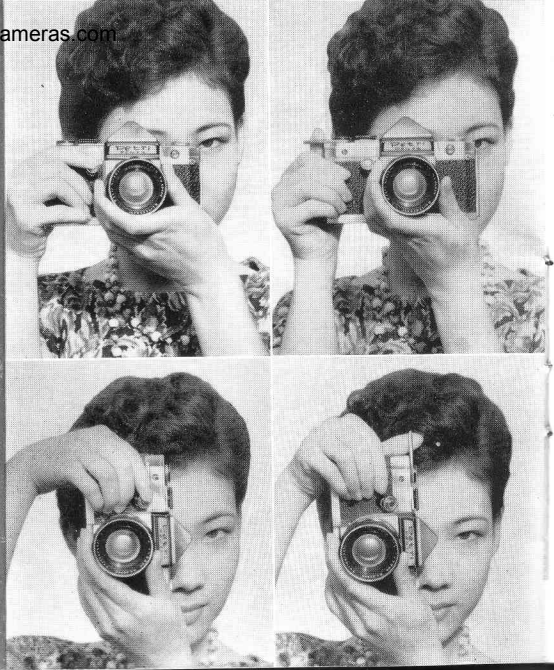
NOTE: When cocking camera, advance the film winding lever fully until it stops to insure full advancement of film.

SETTING APERTURE (DIAPHRAGM)

Turn the Diaphragm ring to the desired lens opening. Before use Diaphragm ring, please read "ONE HAND PRESET APERTURE" on page 12 and "EXPOSURE SETTING" on page 14.

Since the film size of a 35mm camera is small, the slightest movement of the camera greatly affects the sharpness of the picture. When holding the camera, try to keep at least one elbow as close to the body as possible.

Cradle the camera in both palms, check your breath and press the shutter release button with the right index finger in a smooth and steady motion. Do not jerk the camera.

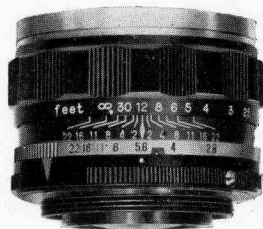


FOCAL ADJUSTMENT

Turn the helicoid ring to the right or left until the image in the round bright image glass in the center of the viewfinder becomes clearest. Focal adjustment is usually done with the aperture wide open, but the effectiveness of image making can be tested by presetting the aperture at a certain value.

ONE HAND PRESET APERTURE

Before adjusting focus, open the aperture widely by turning the Diaphragm Presetting Ring to match the red point (●) on the same Ring with the red mark (◆) on the Depth of Field Scale. See picture A. Then, inside the viewfinder will maintain maximum brightness. After focal adjustment has been completed, do not forget to turn the Diaphragm Presetting Ring to the right until it stops at the match point (green mark). See picture B. You will notice that the field-of-view in the viewfinder becomes dark. All these operations can easily be made by one hand.



(A)



(B)

FOCAL PLANE SHUTTER OF PETRI PENTA



SHUTTER SPEED :

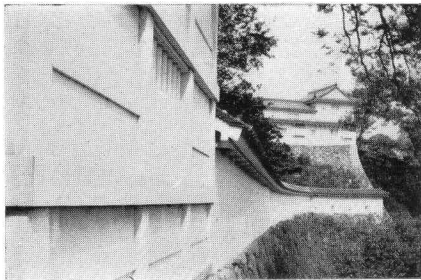
The PETRI PENTA is equipped with shutter of 1/2, 1/4, 1/8, 1/15, 1/30, X, 1/60, 1/125, 1/250, 1/500 sec. & B. (Note that the numbers on the dial are all denominators of shutter speeds.)

The big, easy-to-read-numbers type Shutter Dial is another PETRI PENTA first!

ADJUSTMENT OF SHUTTER SPEED :

Turn the Shutter Dial to match the green arrow-mark with your desired speed. When using X(red) for flash photography, refer to "FLASH PHOTOGRAPHY" on page 19.

EXPOSURE SETTING



Aperture Setting

Turn the Diaphragm ring on the lens barrel in either direction and set it at the desired opening. This Diaphragm ring is of the click-stop type so there is no fear of it sliding during shooting. If you set the Red Figures 11 and 12 on the Diaphragm Ring and Distance Scale at the Red Mark (◆), you do not need to adjust focus each time you aim at different subjects. Just set the shutter speed dial at your desired speeds and shoot.



SEASONABLE EXPOSURE GUIDE

SEASON MONTH SUBJECT	SPRING		SUMMER		AUTUMN		WINTER	
	Mar. Apr.	May.	June. July	Aug.	Sept. Oct.	Nov.	Dec. Jan.	Feb.
	F.	SEC.	F.	SEC.	F.	SEC.	F.	SEC.
Bright Subject	16	1/250	22	1/250	16	1/250	11	1/250
Average Subjects	8	1/250	11	1/250	8	1/250	8	1/250
Shaded Subjects	4	1/125	4	1/250	4	1/60	4	1/30
Weather	Fair		Cloudy (Slight)		Cloudy		Cloudy (Heavy)	
	Standard		2 Times		3 Times		4 Times	
Time	10 am. ~ 2 pm.		9 am. ~ 10 am. 2 pm. ~ 3 pm.		8 am. ~ 9 am. 3 pm. ~ 4 pm.			
	Standard		2 Times		3 Times			
Film	ASA 100				ASA 50			
	H. S. pan				pan.			
	Standard				2 Times			

