



ACCORD Coupe • ACCORD Sedan • ACCORD Hybrid

# Honda Music Link

User's Guide

# Contents

<b>Honda Music Link</b> .....	<b>3</b>
<b>What's Included</b> .....	<b>4</b>
<b>What You Need</b> .....	<b>5</b>
<b>Using Music Link Without Honda TTS</b> .....	<b>6</b>
Connecting Your iPod .....	6
Disconnecting Your iPod .....	6
Using the Audio System Controls .....	7
Using the Navigation System Controls .....	8
Playing Music.....	9
Selecting a Play Mode.....	9
<b>Using Music Link With Honda TTS</b> .....	<b>10</b>
Honda TTS / Info Tags .....	10
Before Installing Honda TTS.....	11
Installing Honda TTS .....	11
Uninstalling Honda TTS .....	11
Running Honda TTS .....	12
Text-to-Speech Settings .....	13
Connecting Your iPod .....	14
Disconnecting Your iPod.....	14
Using the Audio System Controls .....	15
Using the Navigation System Controls .....	16
Playing Music.....	17
Selecting a Play Mode/Category .....	17
<b>Tips</b> .....	<b>20</b>
<b>Support</b> .....	<b>22</b>

Getting Started Quickly

Designed specifically for Honda vehicles, Honda Music Link allows you to play music from your Apple® iPod® on your vehicle's audio system. Music Link connects your iPod directly to your vehicle's audio system for the best sound-quality results. (It does not convert music from your iPod to an FM radio signal to use your vehicle's radio to play music.) Once connected, Music Link allows you to use the audio system's controls to play and search for music from an iPod, and it charges your iPod battery.

**To get started using Music Link quickly**, see the Using Music Link Without Honda TTS\* section of this guide or the Quick Reference Guide. Both will show you how to connect your iPod, play music (either shuffle songs or shuffle albums), and skip to the next song or album.

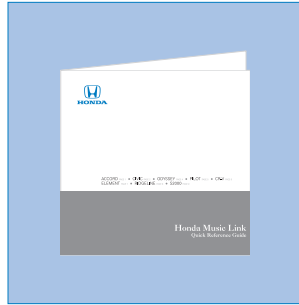
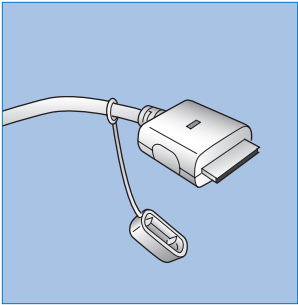
**To get the most out of Music Link**, first install the Honda TTS software application provided on the Honda Music Link CD. (See Using Music Link With Honda TTS.) Honda TTS is an optional software that installs on the Mac or PC you use with your iPod. It provides voice prompts to help you find music on your iPod, and it allows you to shuffle songs, shuffle albums, seek/skip to the next song or album, and search playlists, artists, albums, and genres.

**NOTE:** Honda TTS is not required to operate Music Link.

\* Text-to-speech (TTS)

# What's Included

Your Honda Music Link kit includes a dealer-installed Music Link cable located in your vehicle's glove box, a Quick Reference Guide to get you started quickly, and a Honda Music Link CD.



# What You Need

- **iPod:** 4th generation or later iPod, iPod mini®, iPod U2 Special Edition®, or iPod nano® (see right). Music Link cannot be used with iPod shuffle®.

Make sure your iPod has been updated with the latest firmware from Apple. Visit [www.apple.com/ipod/download](http://www.apple.com/ipod/download) for more information.

**NOTE:** Use the USB 2.0 or FireWire cable that came with your iPod or iPod mini to ensure proper operation.

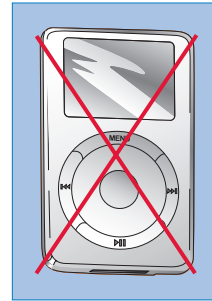
- **Mac:** OS X 10.3 or later  
- OR -

**PC:** Windows XP (SP2) or Windows 2000 (SP4) with TTS engine

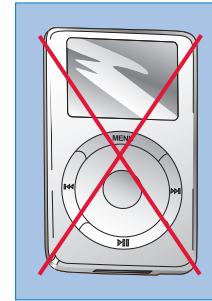
**NOTE:** Use iPods formatted for Mac only with Mac computers, and use iPods formatted for PC only with PCs.

- **iTunes®:** 4.9 or later. Visit [www.apple.com/itunes/download](http://www.apple.com/itunes/download) for more information.

**Installation Note:** Honda Music Link can be installed on *applicable* vehicles equipped with factory- and dealer-installed Honda CD players and CD changers. American Honda makes no guarantee that Music Link will operate or operate properly on vehicles equipped with a non-Honda CD changer or a non-Honda CD player.



1st-generation iPod



2nd-generation iPod



3rd-generation iPod



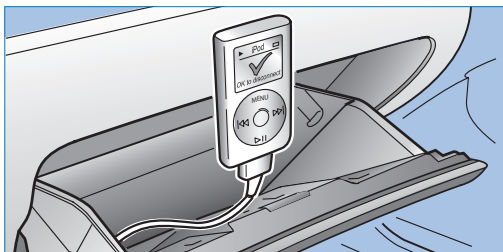
4th-generation iPod, iPod mini, and iPod nano

# Using Music Link Without Honda TTS

## Connecting Your iPod

Make sure your iPod is in music mode (not photo mode). Then, find the Music Link cable installed inside the glove box, and plug it into the dock connector port on the bottom of the iPod. When the Music Link cable is properly connected:

- A large check mark appears on the iPod screen. (See below.)
- You cannot operate the iPod using its controls (click wheel, etc). It can only be operated using your vehicle's audio system controls.
- Your vehicle charges the iPod battery when the ignition switch is in the ON (II) or ACC (I) position. It does not charge the iPod when the ignition switch is in the LOCK (0) position.



## Disconnecting Your iPod

To disconnect the iPod, squeeze both sides of the Music Link cable connector, and unplug the cable. You can connect and disconnect your iPod while the audio system is on or off.

### IMPORTANT:

- For your safety, do not connect or disconnect the iPod while driving.
- Secure the iPod in the glove box. Do not place it on or allow it to fall onto the vehicle floor, where it can get stuck under the brake pedal or accelerator pedal.
- Do not leave the iPod in the vehicle in high temperatures or expose it to extended periods of direct sunlight. Doing so may damage it.
- To avoid damaging the Music Link cable, do not pull strongly on the cable. Always keep the connector dry and cap the connector when it is not in use.

# Using Music Link Without Honda TTS (Continued)

[▲ Table of Contents](#)

## Using the Audio System Controls

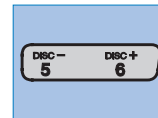
Music Link allows you to use the buttons on your audio system to control iPod functions. There are two ways\* to listen to music: You can *shuffle all albums* or *shuffle all songs*. Selecting disc number 5 on your audio system corresponds to the *shuffle all albums* play mode, while selecting disc number 6 corresponds to the *shuffle all songs* play mode.

**NOTE:** Honda factory-installed audio systems vary from model to model and may have different button names for the same functions.

- To select Music Link, press CD/AUX or CD/AUX/XM button (depending on your Accord model).
- To select a play mode, use the DISC– and DISC+ buttons (Preset 5 and Preset 6, respectively) or the CH DISC button to scroll thru the disc numbers. When the desired disc number is shown in the audio system display, press and hold either SEEK/SKIP button (▶▶ or ◀◀) for at least 1 full second (or, on some models, until you hear a beep).

\* See [page 10](#) to learn how to use additional play modes/categories.

## Audio System Controls



Use to select Music Link.

Use to scroll thru disc numbers.



Use to activate a play mode and seek/skip forward and backward.

**NOTE:** The buttons on the Accord differ from model to model.

## NOTES:

- Depending on the model, the steering wheel audio controls may not operate or may have limited operation when using Music Link.
- It is not necessary to eject any CDs in the CD player/changer to use Music Link. Press the CD/AUX or CD/AUX/XM button repeatedly to toggle between the CD player/changer, XM radio, and Music Link.

# Using Music Link Without Honda TTS (Continued)

[▲ Table of Contents](#)

For models equipped with the NAVIGATION SYSTEM only

## Using the Navigation System Controls

Your Navigation system features limited control and display information for Music Link. To view Music Link on the Navi screen, press the AUDIO button on the Navi system.

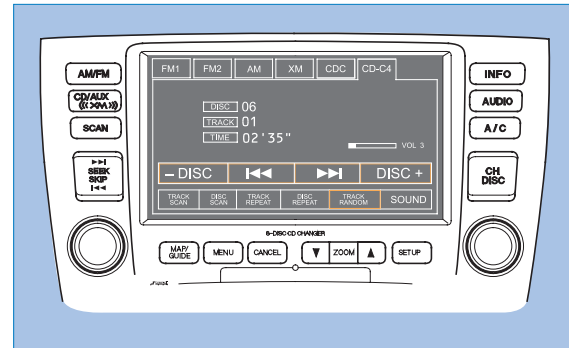


Use to view Music Link on the Navi screen.

- *To select a play mode*, touch the –DISC and DISC+ buttons on the Navi screen to scroll thru the disc numbers. When the desired disc number is displayed, press and hold either SEEK/SKIP button (▶▶ or ◀◀) on the audio system for at least 1 full second (or, on some models, until you hear a beep).
- *To shuffle songs*, touch the TRACK RANDOM button on the Navi screen. Music Link shuffles all songs within the selected play mode. For example, if you select *shuffle all albums* (Disc 5) and then touch TRACK RANDOM, Music Link will shuffle all songs within an album in random order.

**NOTE:** The TRACK RANDOM feature does not work while Music Link is in the shuffle all songs (Disc 6) play mode.

## Navigation Screen



**NOTE:** The Navigation screen on your Accord may differ slightly.

- *To skip the track forward and backward*, touch the ▶▶ button on the Navi screen to skip to the beginning of the next song or the ◀◀ button to skip to the beginning of the song currently playing.

**NOTE:** The skip buttons (▶▶ and ◀◀) on the Navi screen cannot be used to activate a play mode. You cannot press and hold these buttons to change the play mode.



# Using Music Link Without Honda TTS (Continued)

## Playing Music

1. Connect the iPod (see [page 6](#)), turn the ignition switch to the ON (II) or ACC (I) position, and turn on the audio system.
2. Press the CD/AUX or CD/AUX/XM button to select Music Link. If the audio system plays a disc in the CD player/changer, press the CD/AUX or CD/AUX/XM button again to select Music Link.

## Selecting a Play Mode

- *To shuffle the albums* on your iPod in random order, select **Disc 5**, then press and hold either SEEK/SKIP button (⏮ or ⏭) for at least 1 full second (or, on some models, until you hear a beep).
  - Press and release the SEEK/SKIP button to skip to the next song (⏭) or to the beginning of the song currently playing (⏮) within an album.
  - Press and hold either SEEK/SKIP button (⏭ or ⏮) for at least 1 full second (or, on some models, until you hear a beep) to skip to the beginning of another album.

Pressing and holding the SEEK/SKIP (⏮) button will not skip to the previously played album. Music Link continues to shuffle albums in random order whether you press and hold the forward (⏭) or backward (⏮) SEEK/SKIP button.

In shuffle albums mode (Disc 5), Music Link only plays songs that have album information entered in the info tags. If none of the songs on an iPod have album information, all of the songs are treated as one album. See Info Tags on [page 10](#) for more information.

- *To shuffle all songs* in random order, select **Disc 6**, then press and hold either SEEK/SKIP button (⏭ or ⏮) for at least 1 full second (or, on some models, until you hear a beep). After selecting Disc 6, press and release the SEEK/SKIP button to skip to the next song (⏭) or to the beginning of the song currently playing (⏮).

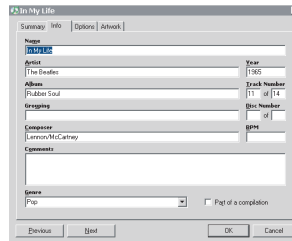
**See the [Tips section](#) of this user's guide for more information.**

# Using Music Link With Honda TTS

To get the most out of Music Link, first install the Honda TTS software application provided on the Honda Music Link CD. This optional software installs on the Mac or PC you use with your iPod. It creates voice prompts to help you find music on your iPod, and it allows you to shuffle songs, shuffle albums, seek/skip to the next song/album or previous song/album, and search playlists, albums, artists, and genres.

## Honda TTS

Honda TTS is a software application that creates text-to-speech (TTS) files based on the information tags attached to each song on your iPod. Once installed on your computer, Honda TTS automatically launches every time you connect your iPod to your computer. It scans the music on your iPod and creates TTS files that contain all of the voice prompts Music Link will need to help you search for music.



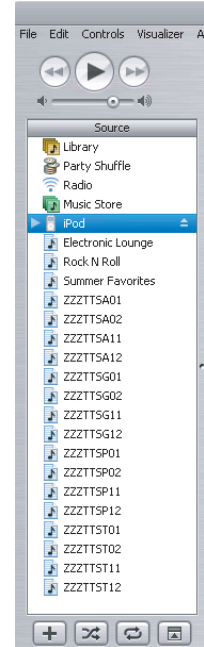
Info Tags Screen in iTunes

## Info Tags

Each song on your iPod and in iTunes has a set of "info tags" attached to it, like Name, Artist, Album, Year, etc. (below left). You can edit these info tags by:

- Clicking on the desired song in iTunes
- Going to File, then Get Info
- Clicking on the Info tab

Honda TTS scans the information contained in the Artist, Album, and Genre info tag fields. It also scans the names of the playlists on your iPod. It then creates TTS files for the first letter of every artist, album, genre, and playlist, as well as TTS files for the names of every artist, album, genre, and playlist at your iPod. The TTS files are saved in your iTunes library and as playlists at your iPod and in iTunes. Each TTS playlist begins with "ZZZTTS" (right).



TTS Files/Playlists in iTunes

## Before Installing Honda TTS

Before you install Honda TTS on your computer, make sure you:

- Install iTunes 4.9 or later (available for download at [www.apple.com/itunes/download](http://www.apple.com/itunes/download)).
- Set your iPod to synchronize manually. (Go to Edit/Preferences, click on the iPod tab, and select "Manually manage songs and playlists".)
- Disconnect (eject) your iPod from your computer.
- Adjust the text-to-speech settings on your Mac or PC to your preference. ([See page 13.](#))
- Close all other applications.

## Installing Honda TTS

**Mac:** Double-click on the Honda TTS.pkg icon in the Mac Install folder, and follow the installation prompts.

**PC:** Double-click on the Setup.exe icon in the Windows Install folder, and follow the installation prompts.

## Uninstalling Honda TTS

To uninstall Honda TTS on a **Mac**:

1. Go to System Preference/Login Items.
2. Delete Honda Helper.
3. Reboot.

To uninstall Honda TTS on a **PC**:

1. Go to Start/Settings/Control Panel.
2. Double-click on Add/Remove Programs.
3. Select the Honda TTS folder.
4. Click on the Remove button, and follow the uninstall prompts.

**NOTE:** Uninstalling Honda TTS does not remove any TTS files in iTunes or on your iPod. Delete those files (TTS playlists and TTS files in the iTunes library) manually.

## Running Honda TTS

Once installed, Honda TTS automatically launches every time you connect your iPod to your computer. To run Honda TTS, connect your iPod to your computer. To update (and create TTS files) for the music on your iPod, click the OK button on the Honda TTS update screen. To manually run Honda TTS, launch the program from the applications folder (Mac) or Start Menu (PC).

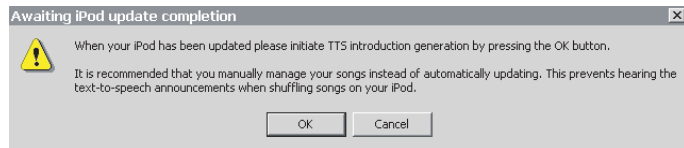
The time needed to run Honda TTS depends on the number of songs and playlists in your music library. Allow about 10–15 minutes per 1,000 files. After the initial run, the time to run Honda TTS should decrease, as long as the TTS files from the previous update remain in iTunes.

If you make any changes to the music on your iPod (add songs, delete songs, create new playlists, edit album names, etc.), make sure you run Honda TTS.

If, upon connecting your iPod, you have not made any changes to the music on the iPod, click the Cancel button on the Honda TTS update screen.

**NOTE:** If, after connecting your iPod and launching Honda TTS, you receive a message that an iPod must be connected to run Honda TTS, simply launch Honda TTS from the applications folder (Mac) or Start menu (PC). Honda TTS should now recognize your iPod.

**See the [Tips section](#) of this user's guide for more information.**



Honda TTS Update Screen

## Text-To-Speech Settings

You can change and adjust the text-to-speech settings for TTS files (voice prompts) that Honda TTS creates. Modifying the system voice and the voice speed may help improve intelligibility.

### Mac

1. Go to Finder/System Preferences.
2. Select the Speech icon.
3. Click on the Text to Speech tab.
4. Select the system voice of your preference from the pull-down menu.
5. Adjust and play the speaking rate.

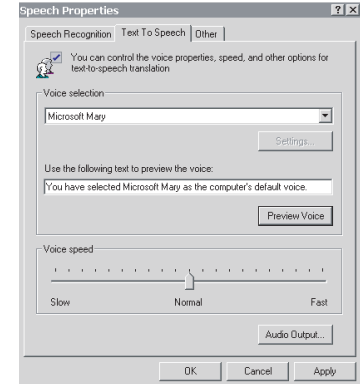


Text to Speech (Mac)

**NOTE:** After changing and adjusting the text-to-speech settings, delete all TTS playlists and files in iTunes and on your iPod, then run Honda TTS.

### PC

1. Open the Control Panel from the Start menu.
2. Select Speech or Sounds, Speech, and Audio.
3. Click on the Text to Speech tab.
4. Select the voice selection of your preference from the pull-down menu. (Either Microsoft Mary or LH Michelle\* is recommended, if available.)
5. Adjust and preview the voice speed.



Text to Speech (PC)

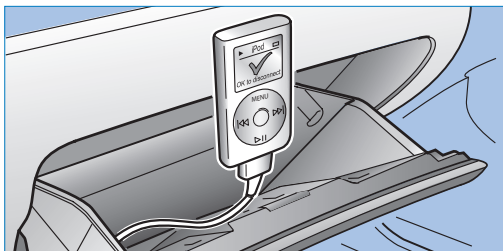
**NOTE:** After changing and adjusting the text-to-speech settings, delete all TTS playlists and files in iTunes and on your iPod, then run Honda TTS.

\* To download LH Michelle, visit <http://www.microsoft.com/msagent/downloads/user.asp>. Click on the "Text-to-speech engines" link, and select "Lernout & Hauspie® TruVoice TTS engine - American English (1 MB exe)" from the pull-down menu.

## Connecting Your iPod

Make sure your iPod is in music mode (not photo mode). Then, find the Music Link cable installed inside the glove box, and plug it into the dock connector port located on the bottom of the iPod. When the Music Link cable is properly connected:

- A large check mark appears on the iPod screen. (See below.)
- You cannot operate the iPod using its controls (click wheel, etc). It can only be operated using your vehicle's audio system controls.
- Your vehicle charges the iPod battery when the ignition switch is in the ON (II) or ACC (I) position. It does not charge the iPod when the ignition switch is in the LOCK (0) position.



## Disconnecting Your iPod

To disconnect the iPod, squeeze both sides of the Music Link cable connector, and unplug the cable. You can connect and disconnect your iPod while the audio system is on or off.

### IMPORTANT:

- For your safety, do not connect or disconnect the iPod while driving.
- Secure the iPod in the glove box. Do not place it on or allow it to fall onto the vehicle floor, where it can get stuck under the brake pedal or accelerator pedal.
- Do not leave the iPod in the vehicle in high temperatures or expose it to extended periods of direct sunlight. Doing so may damage it.
- To avoid damaging the Music Link cable, do not pull strongly on the cable. Always keep the connector dry and cap the connector when it is not in use.

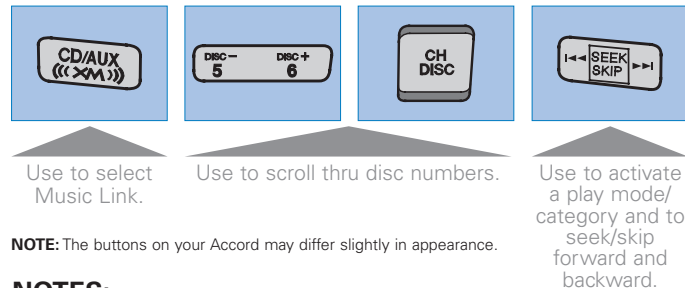
## Using the Audio System Controls

Music Link allows you to use the buttons on your audio system to control iPod functions. There are six play modes/categories, or six ways to listen to music. Each disc number (1–6) corresponds with a play mode/category in Music Link. For example, selecting disc number 1 on your audio system corresponds to the *search playlists* category in Music Link.

**NOTE:** Honda factory-installed audio systems vary from model to model and may have different button names for the same functions.

- To select Music Link, press the CD/AUX or CD/AUX/XM button (depending on your Accord model).
- To select a play mode/category, use the DISC– and DISC+ buttons (Preset 5 and Preset 6, respectively) or the CH DISC button to scroll thru the disc numbers. When the desired disc number is shown in the audio system display, press and hold either SEEK/SKIP button (▶▶ or ◀◀) for at least 1 full second (or, on some models, until you hear a beep).

## Audio System Controls



**NOTE:** The buttons on your Accord may differ slightly in appearance.

## NOTES:

- Depending on the model, the steering wheel audio controls may not operate or may have limited operation when using Music Link.
- It is not necessary to eject any CDs in the CD player/changer to use Music Link. Press the CD/AUX or CD/AUX/XM button to toggle between the CD player/changer and Music Link.
- When Music Link is cycling through the alphabet or announcing names, you cannot select another play mode/category. You can only select another play mode/category when Music Link is playing a song.

For models equipped with the NAVIGATION SYSTEM only

## Using the Navigation System Controls

Your Navigation system features limited control and display information for Music Link. To view Music Link on the Navi screen, press the AUDIO button on the Navigation system.

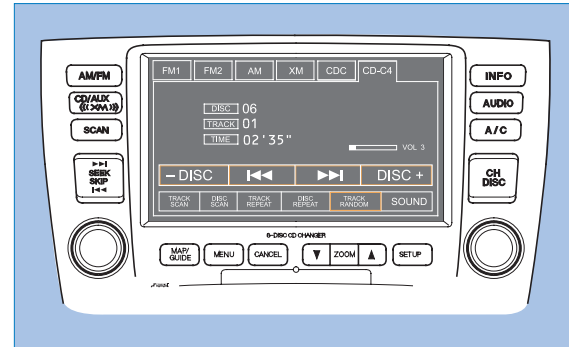


Use to view Music Link on the Navi screen.

- To select a play mode/category, touch the –DISC and DISC + buttons on the Navi screen to scroll thru the disc numbers. When the desired disc number is displayed, press and hold either SEEK/SKIP button (▶▶ or ◀◀) for at least 1 full second (or, on some models, until you hear a beep).
- To shuffle songs, touch the TRACK RANDOM button on the Navi screen. Music Link shuffles all songs within the selected category/play mode. For example, if you select and play a playlist (Disc 1) and then touch TRACK RANDOM, Music Link will shuffle all songs within that playlist in random order.

**NOTE:** The TRACK RANDOM feature does not work while Music Link is in the shuffle all songs (Disc 6) play mode.

## Navigation Screen



**NOTE:** The Navigation screen on your Accord may differ slightly.

- To skip the track forward and backward, touch the ▶▶ button on the Navi screen to skip to the beginning of the next song or the ◀◀ button to skip to the beginning of the song currently playing.

**NOTE:** The skip buttons (▶▶ and ◀◀) on the Navi screen cannot be used to activate a play mode/category. You cannot press and hold these buttons to change the play mode/category.



## Playing Music

1. Connect the iPod (see [page 14](#)), turn the ignition switch to the ON (II) or ACC (I) position, and turn on the audio system.
2. Press the CD/AUX or CD/AUX/XM button to select Music Link. If the audio system plays a disc in the CD player/changer, press the CD/AUX or CD/AUX/XM button again to select Music Link.

## Selecting a Play Mode/Category

- *To search playlists*, select **Disc 1**, then press and hold either SEEK/SKIP button (▶▶ or ◀◀) for at least 1 full second (or, on some models, until you hear a beep). Music Link announces the first letter of each playlist.
    - Press and release the SEEK/SKIP (▶▶) button immediately after hearing the desired letter. Music Link begins playing the first song of the first playlist that begins with the selected letter.
- OR -
- To hear the names of the playlists that begin with a desired letter, press and release the SEEK/SKIP (▶▶) button immediately after hearing the letter, then press and hold either SEEK/SKIP button (▶▶ or ◀◀) for at least 1 full second (or, on some models, until you hear a beep).

- Music Link announces the names of the playlists that begin with the selected letter. Press and release the SEEK/SKIP (▶▶) button immediately after hearing the desired playlist name. Music Link begins playing the first song in the selected playlist.
- *To search artists*, select **Disc 2**, then press and hold either SEEK/SKIP button (▶▶ or ◀◀) for at least 1 full second (or, on some models, until you hear a beep). Music Link announces the first letter of each artist.
    - Press and release the SEEK/SKIP (▶▶) button immediately after hearing the desired letter. Music Link begins playing the first song of the first artist that begins with the selected letter.
- OR -
- To hear the artist names that begin with a desired letter, press and release the SEEK/SKIP (▶▶) button immediately after hearing the letter, then press and hold either SEEK/SKIP button (▶▶ or ◀◀) for at least 1 full second.
  - Music Link announces the artist names that begin with the selected letter. Press and release the SEEK/SKIP (▶▶) button immediately after hearing the desired artist name. Music Link begins playing the first song by the selected artist.

## Selecting a Play Mode/Category (Cont.)

- *To search albums*, select **Disc 3**, then press and hold either SEEK/SKIP button (▶▶ or ◀◀) for at least 1 full second (or, on some models, until you hear a beep). Music Link announces the first letter of each album.
  - Press and release the SEEK/SKIP (▶▶) button immediately after hearing the desired letter. Music Link begins playing the first song of the first album that begins with the selected letter.
- OR -
- To hear the album names that begin with a desired letter, press and release the SEEK/SKIP (▶▶) button immediately after hearing the letter, then press and hold either SEEK/SKIP button (▶▶ or ◀◀) for at least 1 full second (or, on some models, until you hear a beep).
- Music Link announces the names of the albums that begin with the selected letter. Press and release the SEEK/SKIP (▶▶) button immediately after hearing the desired album name. Music Link begins playing the first song in the selected album.

- *To search genres*, select **Disc 4**, then press and hold either SEEK/SKIP button (▶▶ or ◀◀) for at least 1 full second (or, on some models, until you hear a beep). Music Link announces the first letter of each genre.
  - Press and release the SEEK/SKIP (▶▶) button immediately after hearing the desired letter. Music Link begins playing the first song of the first genre that begins with the selected letter.
- OR -
- To hear the genre names that begin with a desired letter, press and release the SEEK/SKIP (▶▶) button immediately after hearing the letter, then press and hold either SEEK/SKIP button (▶▶ or ◀◀) for at least 1 full second.
- Music Link announces the genre names that begin with the selected letter. Press and release the SEEK/SKIP (▶▶) button immediately after hearing the desired genre name. Music Link begins playing the first song by the selected artist.

## Selecting a Play Mode/Category (Cont.)

- To shuffle the albums on your iPod in random order, select **Disc 5**, then press and hold either SEEK/SKIP button (▶▶ or ◀◀) for at least 1 full second (or, on some models, until you hear a beep).

– Press and release the SEEK/SKIP button to skip to the next song (▶▶) or to the beginning of the song currently playing (◀◀) within an album.

– Press and hold either SEEK/SKIP button (▶▶ or ◀◀) for at least 1 full second (or, on some models, until you hear a beep) to skip to the beginning of another album.

Pressing and holding the SEEK/SKIP (◀◀) button will not skip to the previously played album. Music Link continues to shuffle albums in random order whether you press and hold the forward (▶▶) or backward (◀◀) SEEK/SKIP button.

In shuffle albums mode (Disc 5), Music Link only plays songs that have album information entered in the info tags. If none of the songs on an iPod have album information, all of the songs are treated as one album.

- To shuffle all songs in random order, select **Disc 6**, then press and hold either SEEK/SKIP button (▶▶ or ◀◀) for at least 1 full second (or, on some models, until you hear a beep). After selecting Disc 6, press and release the SEEK/SKIP button to skip to the next song (▶▶) or to the beginning of the song currently playing (◀◀).

**See the [Tips section](#) of this user's guide for more information.**

## Music Link Playback

Music Link begins playback with the last song played on the iPod. If no song is queued, Music Link shuffles all songs in random order (Disc 6).

## Audio System Controls

- After pushing the appropriate button to activate a play mode or category search, **it may take up to 10 seconds** for Music Link to announce the alphabet or names associated with that play mode or category search.
- **Selecting a Disc Number:** Unlike using a CD changer, when using Music Link, the preset buttons (1–6) on your vehicle's audio system do not directly correspond to Music Link's different play modes and category searches (Disc 1–6). To change the disc number (play mode/category search), use only the DISC– and DISC+ buttons (Preset 5 and Preset 6, respectively) or the CH DISC button, then press and hold either SEEK/SKIP button (▶▶ or ◀◀) for at least 1 full second (or, on some models, until you hear a beep).

WITHOUT Navigation System

- **A.SEL/RDM Button:** Push the A.SEL/RDM button on the audio system to shuffle all songs within the selected category/play mode. For example, if you select and play a playlist (Disc 1) and then press the A.SEL/RDM button, Music Link will shuffle all songs within that playlist in random order.

**NOTE:** The A.SEL/RDM button does not work while Music Link is in the *shuffle all songs* (Disc 6) play mode.

with NAVIGATION SYSTEM

- **TRACK RANDOM Button:** Touch TRACK RANDOM on the Navi screen to shuffle all songs within the selected category/play mode. For example, if you select and play a playlist (Disc 1) and then touch TRACK RANDOM, Music Link will shuffle all songs within that playlist in random order.

**NOTE:** The TRACK RANDOM feature does not work while Music Link is in the *shuffle all songs* (Disc 6) play mode.

### iTunes Settings

- **For best results, set your iPod to synchronize manually.** (Go to Edit, then Preferences, click on the iPod tab and select "Manually manage songs and playlists".) If you select "Automatically update all songs and playlists," you may hear voice prompts when you shuffle songs on your iPod. If you select "Automatically update selected playlists only," make sure you check all of the playlists that begin with ZZZTTS; otherwise, running Honda TTS will not update all of the music on your iPod.
- **Check the "Connect to Internet when needed" check box in the iTunes preferences.** (Go to Edit, then Preferences, and click on the General tab.) With this feature, when you load a store-bought music CD on your computer, iTunes automatically looks up and fills in the info tags for every song on the disc. This feature not only helps you organize your music accurately, it also saves time.
- **Do not name your playlists "Podcasts."** Doing so may cause undesirable effects during searches because iPod uses this name for podcasting.

- **Keeping the TTS files (playlists that begin with ZZZTTS) in iTunes makes Honda TTS updates quicker.** If you delete these files, Honda TTS will need to regenerate them the next time it runs. However, with the TTS files in iTunes, Honda TTS only needs to generate TTS files for any new music on your iPod.

### Tag Info

- **Song Titles:** Music Link does not search the music on an iPod by song name; it only searches music by artist, album, genre, and playlist name.
- **Music Link does not recognize punctuation** (commas, periods, question marks, dashes, ampersands, etc.). It also does not recognize special characters and accents (à, é, ì, ô, etc.). If punctuation or special characters/accents are used in the artist, album, genre, or playlist name, Music Link will announce it on your audio system as "punctuation" or "not speakable."
- **Make sure there are no spaces** before the first letter or number in the names of your playlists, artists, albums, and genres.
- **Do not keep empty playlists.**

For more information about Honda Music Link and Honda TTS, including FAQs, visit <http://automobiles.honda.com>. For additional support, call Honda Automobile Customer Service at 1-800-999-1009, Monday thru Friday, 6 a.m. to 5 p.m. (PST).

## **Honda TTS Software Updates**

Check out <http://automobiles.honda.com> to download the most recent Honda TTS software and software updates.

**©2005 American Honda Motor Co., Inc. – All Rights Reserved.**

American Honda accepts no responsibility for any lost data on an iPod, even if the data is lost while using this product.

Apple, the Apple logo, iPod, iPod, iTunes, FireWire, and Mac are trademarks of Apple Computer, Inc., registered in the U.S. and other countries.